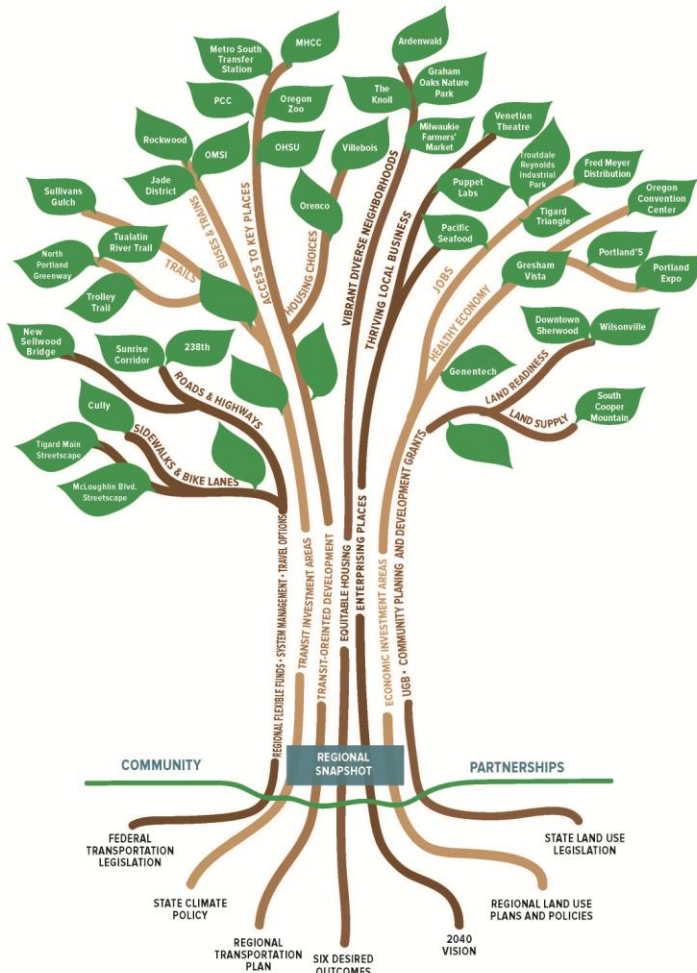


Investment Areas



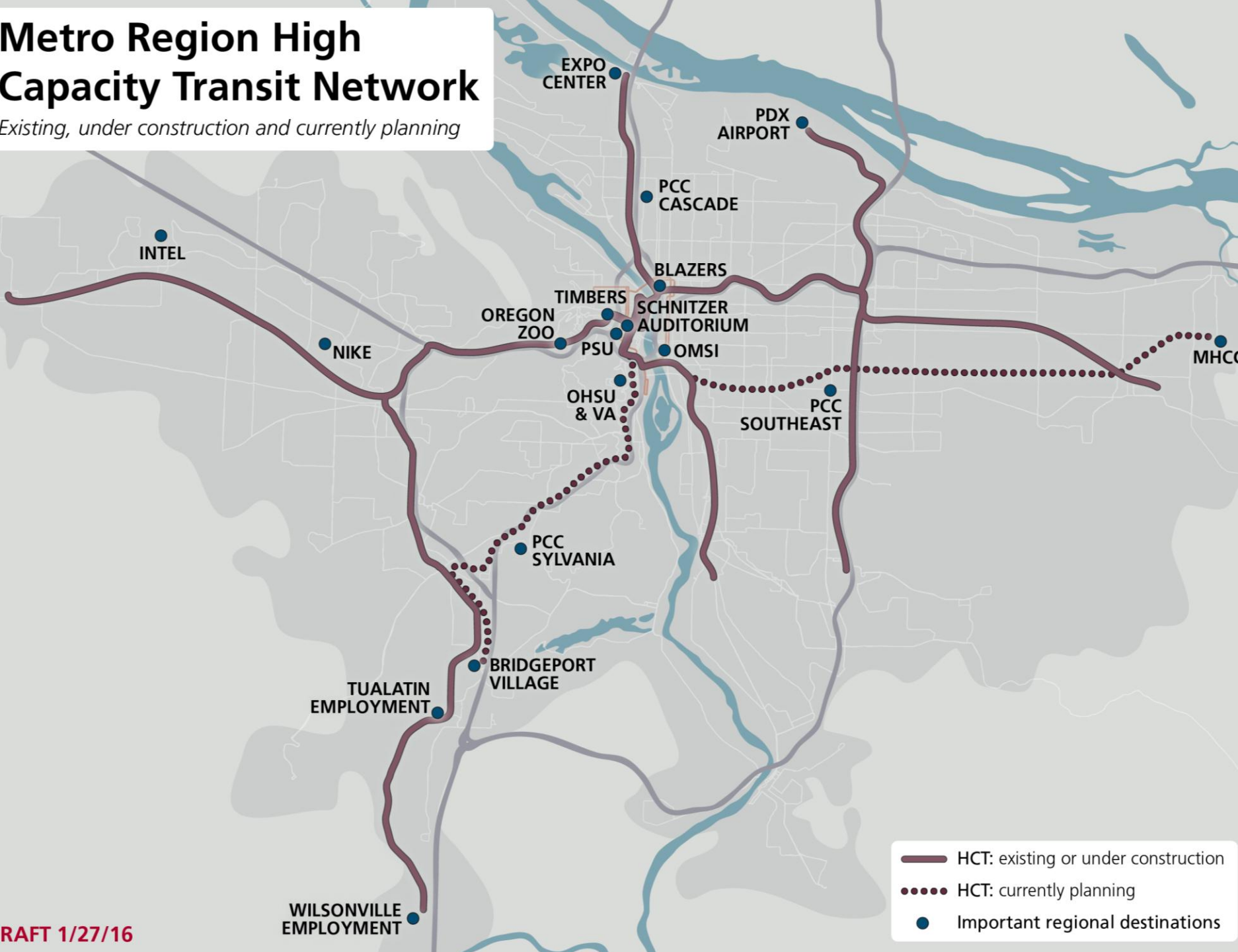
Partnerships, planning and implementation around targeted investment areas



Metro | *Making a great place*

Metro Region High Capacity Transit Network

Existing, under construction and currently planning



- HCT: existing or under construction
- HCT: currently planning
- Important regional destinations

Why shift a successful approach?

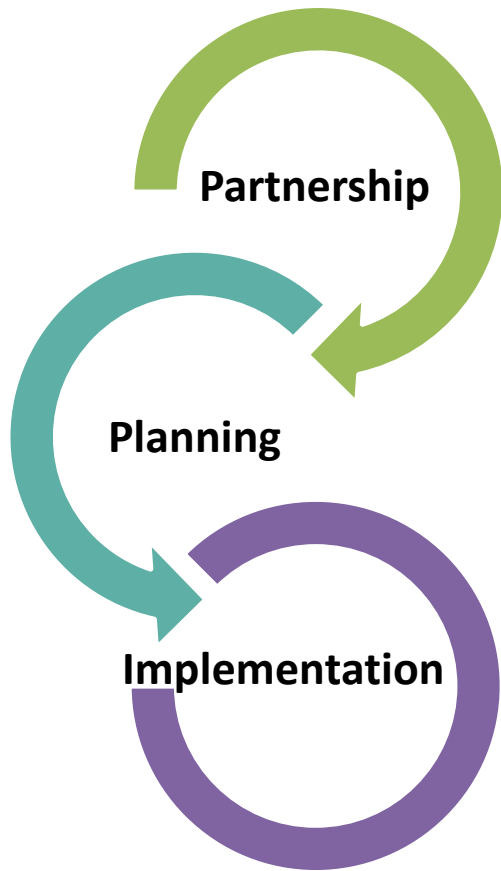
- Regional policies
- Local implementation
- Diminishing resources for public investment – focus on most ROI
- Creative financing strategies have to achieve multiple objectives
- Learning from the Yellow, Green and Orange MAX lines

What Can We Do Even Better?

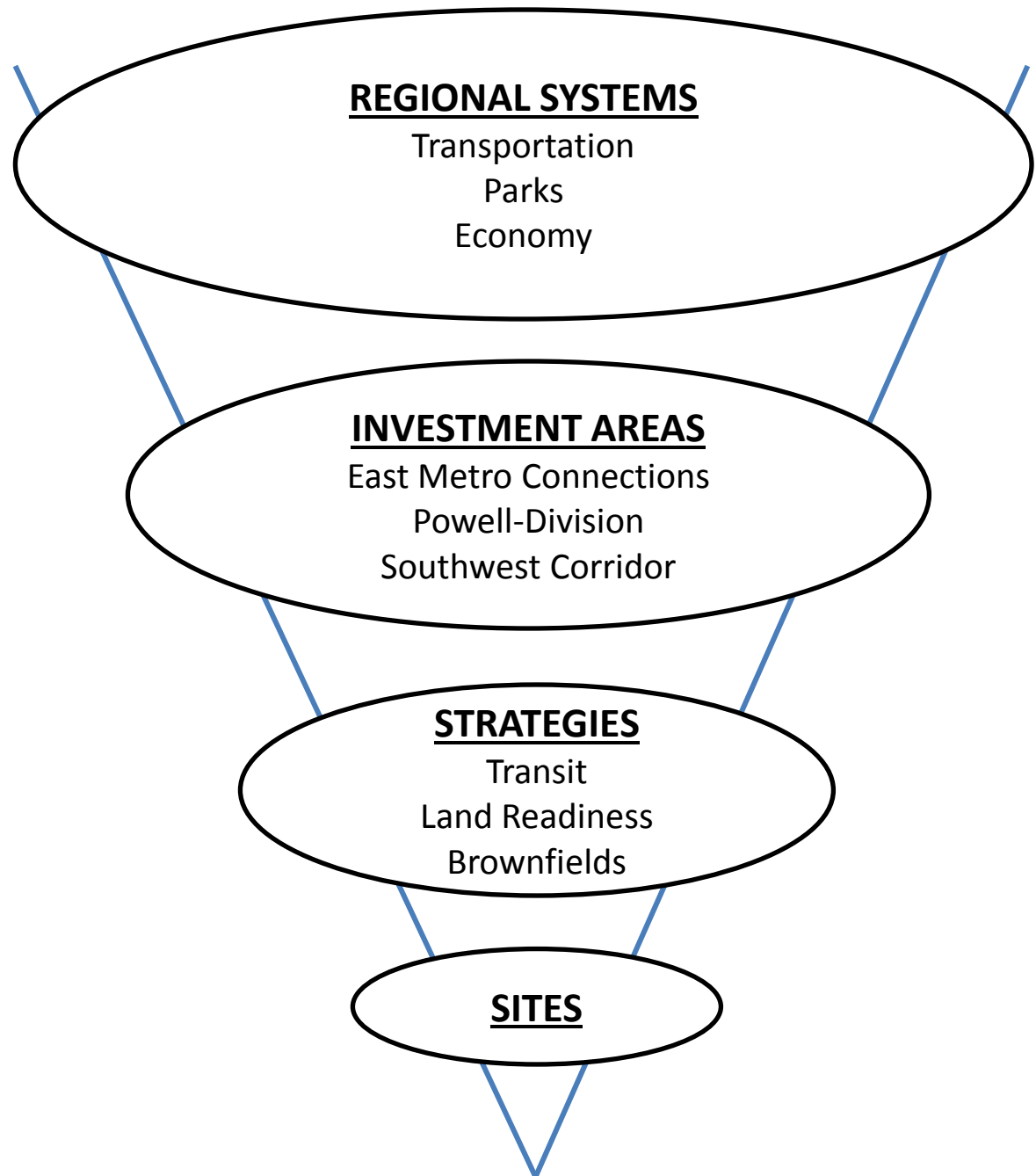
- Complete the high capacity transit system
- Bus service enhancement
- Community equity
- Ensure desirable outcomes from transit investments
 - ✓ Connections to parks
 - ✓ Land use
 - ✓ Housing
 - ✓ Safety



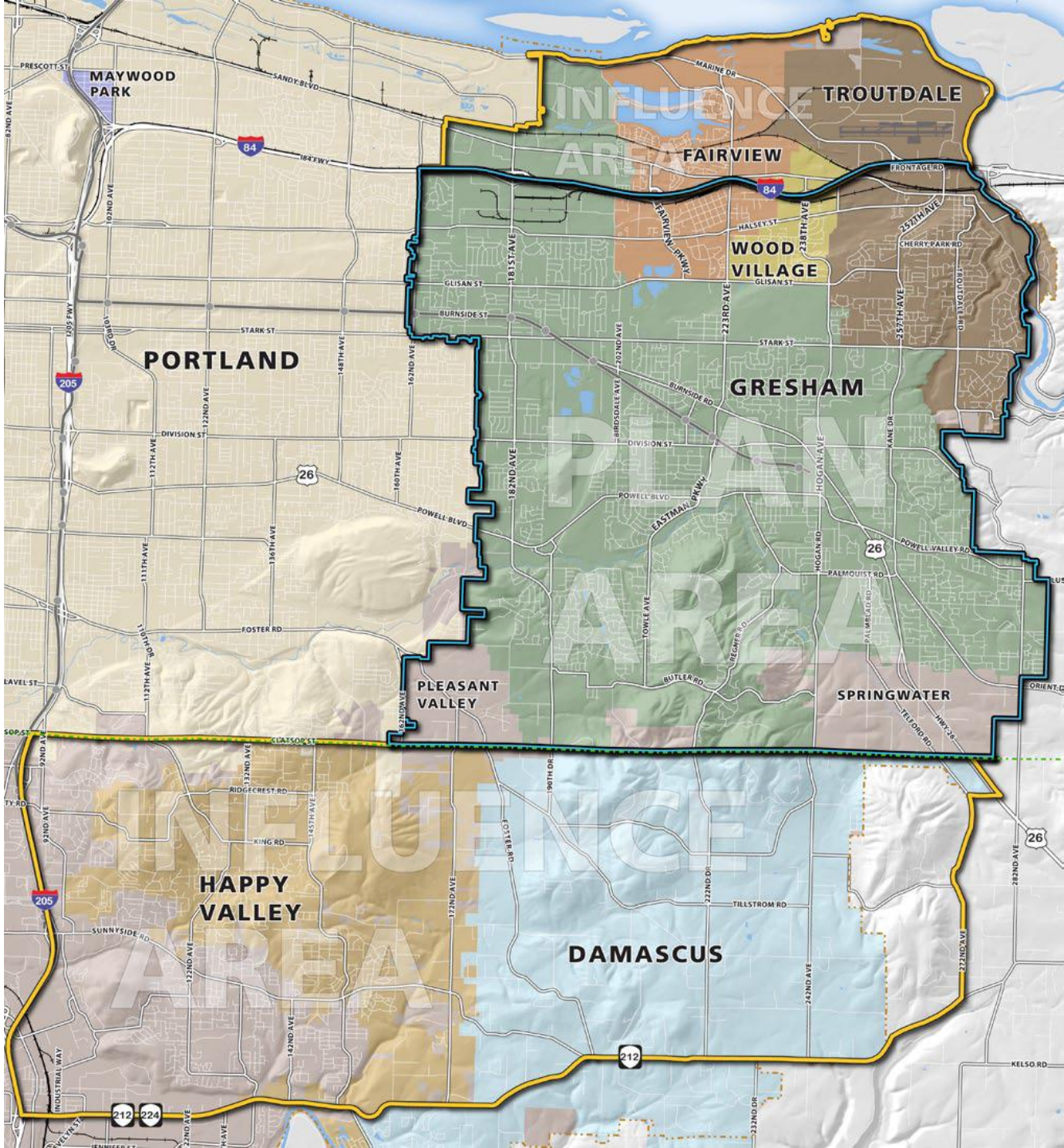
Investment areas approach



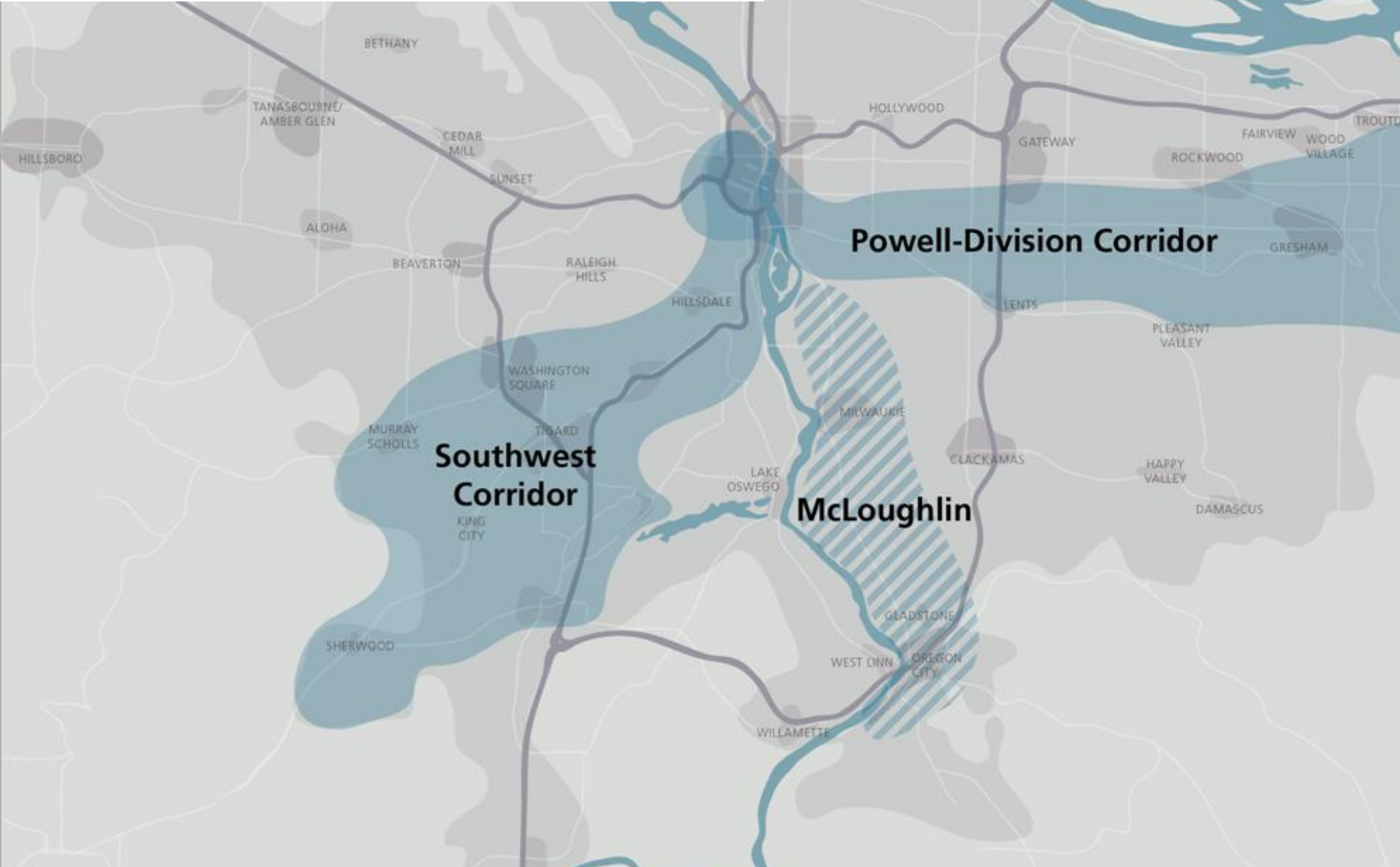
- Public investments catalyze private development
- High capacity transit can be the largest public investment in an area, but isn't always
- Leverage resources at all levels to maximize public benefit and return
- Shared investment strategies – align local, regional, state, federal, community and private interests to maximize benefits



East Metro Connections Plan



Current and potential investment areas



Powell-Division Transit and Development Project Overview


Powell-Division Transit Project: Connecting Communities to Education, Healthcare, and Jobs

Portland State  



Portland State University

Portland State is Oregon's largest and most diverse public university; the 50-acre campus has 30,000 students enrolled and is an anchor to downtown.



Neighborhood Nodes 


- SE Transportation Hub:** Connects light rail, streetcar loop, bus lines, regional trail, OMSI, and PCC.
- SE 82nd:** With an expanding PCC campus and zoned for intensive multi-use development, this area is the site of a Portland Development Commission (PDC) Neighborhood Prosperity Initiative (NPI) Urban Renewal Plan to foster economic opportunity and neighborhood vitality.
- SE 122nd:** A Major Transit Priority Street and a major city traffic street, 122nd is targeted for pedestrian and other streetscape improvements to serve the adjoining residential neighborhoods and commercial areas, and is also the site of a PDC NPI.
- SE 182nd:** With its close proximity to Gresham's Downtown and the Rockwood Neighborhood, this is one of 10 key regional focus areas for TriMet's pedestrian Network Analysis.

Portland CC Southeast  





Portland Community College Southeast Center serves about 10,000 students annually and just began a \$34million expansion. When completed, the campus will accommodate 18,000 students annually.

Downtown Gresham  



As the civic, cultural, and commercial hub of Oregon's 4th largest city, historic downtown Gresham is a gateway to Mt. Hood tourism.

Mt. Hood CC  



With 33,000 students annually district-wide, Mount Hood Community College is planning for major capital improvements as it approaches its 50th anniversary.



OHSU   







As the state's only health and research university and Portland's largest employer, OHSU has 13,500 employees and an annual budget of \$1.4 billion.

Innovation Quadrant   



Portland's Innovation Quadrant enhances the connections and collaboration between higher-education institutions, workforce development providers and private sector partners that are currently located in four districts in the Central City.

East Portland   



With the recently completed East Portland in Motion Plan, the city has committed \$8 million in improvements to walking, biking, and access to transit, including projects on Powell and Division.

Jobs 

Major employers include:

- Oregon Health & Science University: 13,500 employees
- TriMet: 2,600 employees
- Fred Meyer HQ: 2,000 employees
- Advanced Business Technologies: 500 employees
- Mt. Hood Community College: 750 employees

Quick Facts

- More than 8 high schools in the study area, including David Douglas and Reynolds, the two largest in the state of Oregon.
- Three major hospitals in the study area (Legacy Mt. Hood, Adventist, OHSU). Multnomah County Health Department operates primary care clinics in downtown Gresham, Rockwood, and East Portland.
- Catholic Charities opened the Clark Family Center in 2010, a 60,000 sq. ft. facility with plans to serve more than 25,000 annually.
- The Study Area crosses two light rail corridors - the MAX Green Line and the MAX Orange Line (under construction) - and parallels MAX Blue Line.

Portland Metro Region



Study Area Map

 April 11, 2013

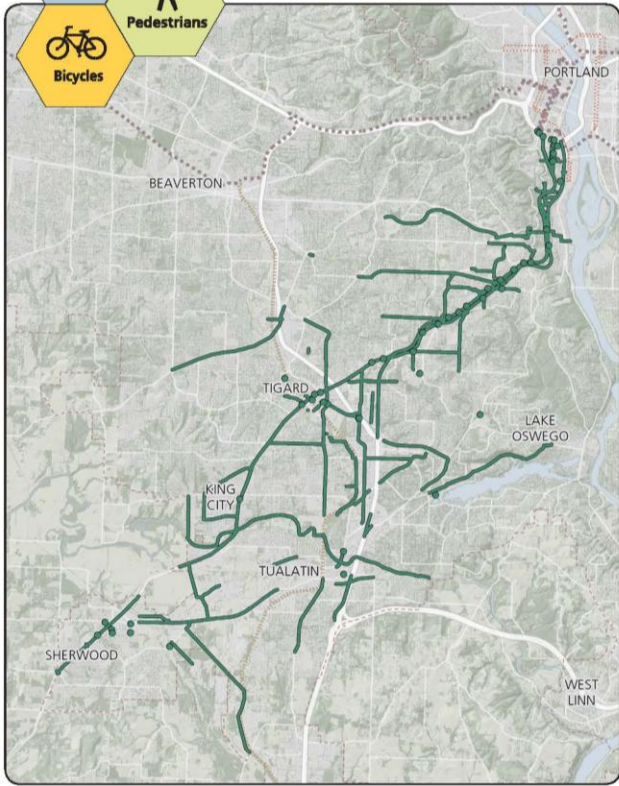


G R E A T P L A C E S

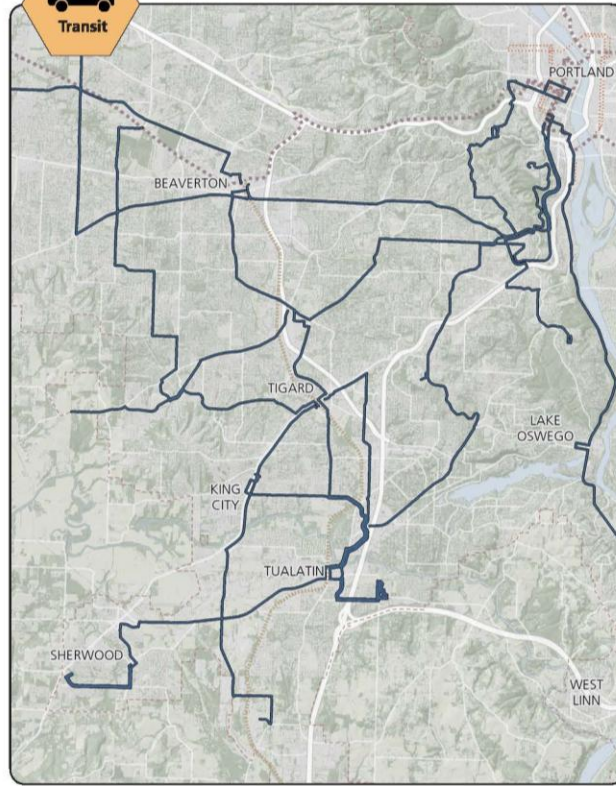
Corridor

Portland • Sherwood • Tigard • Tualatin
Beaverton • Durham • King City
Washington County • ODOT • TriMet • Metro

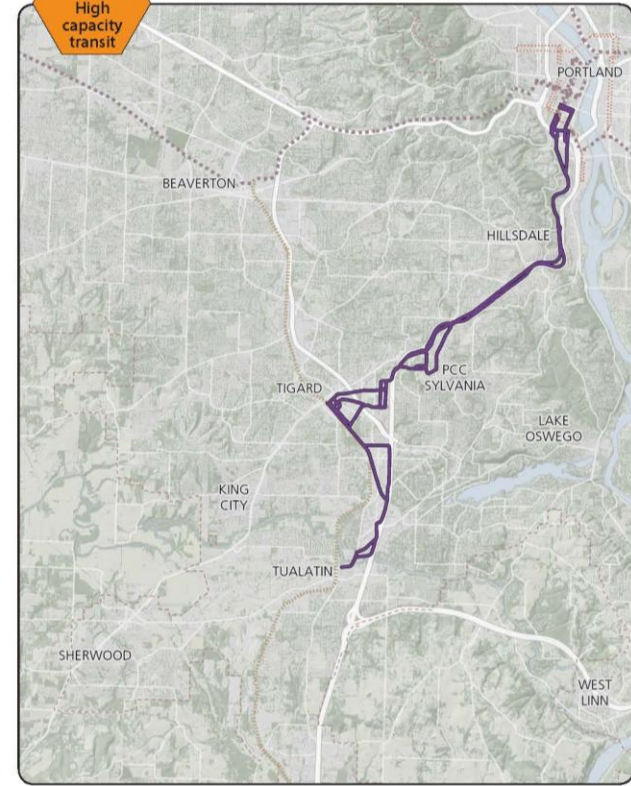
Roadway, Bike and Pedestrian Projects



Local Bus Service Improvements



High Capacity Transit



Build partnerships



Institutionalizing Empowerment

Empower

Collaborate

Involve

Consult

Inform

Committee structure:

Institutionalized
public engagement

Expanded the values
brought to bear in
decision-making

Raised the
accountability of
agencies

A New Approach



- Present public input on par with technical findings
- Hear directly from communities engaged
- Consensus-based decision-making allows for skepticism and provokes constructive participation

Shared Investment Strategies





Investment in the Process

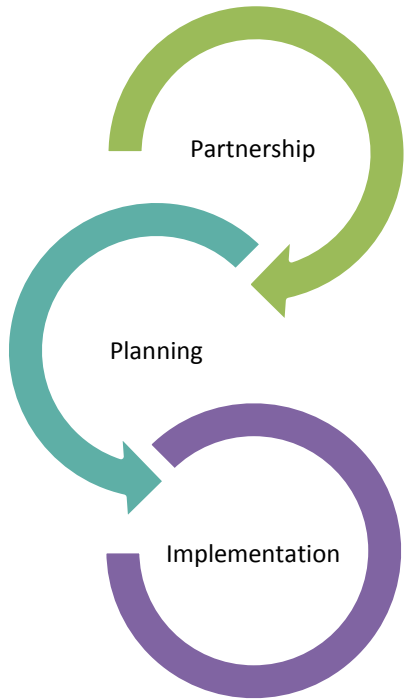
- Consensus reached on all decisions
- Unanimous willingness to continue on committee
- Advancement of equity actions
- Transit project on schedule

Investments in the Community

- Transit-oriented development opportunity at key location
- Community members involved in the development process
- Advancement of community-led vision for Jade District: interim community space



Investment Areas: beyond transportation



- Advancing economic development
- New tools for land readiness and brownfields
- Partnering with communities
- Strategies for future investment areas





 Metro | *Making a great place*